



Outstanding Visibility & Accessibility

27-26 Queens Plaza South, Long Island City, NY

Gateway to LIC

New Retail Development

2,117 SF Ground Floor Retail

18' Ceilings

3,200 SF Lower Level

25'-5" frontage on
Queens Plaza South



Unparalleled Access

10 min. by car to midtown

8 subways/5 buses within 2 blocks

At the foot of Queensboro bridge

A few miles to LGA and JFK airports

HOT RETAIL SIZZLING LONG ISLAND CITY



24/7 Diverse Growing Neighborhood

24,300+ Residential Units

10 million SF Commercial and
Industrial space

4,300 Current/Open Hotel Rooms

40+ Arts & Cultural Organizations

(And Growing!)





27-26 Queens Plaza South
LONG ISLAND CITY



10 Min. from
Manhattan
by Vehicle



7 Min. from
Midtown
by Subway
F, 7, N, W, E, M, R & G



Immediate
Access
to LIE, BQE &
Grand Central Parkway

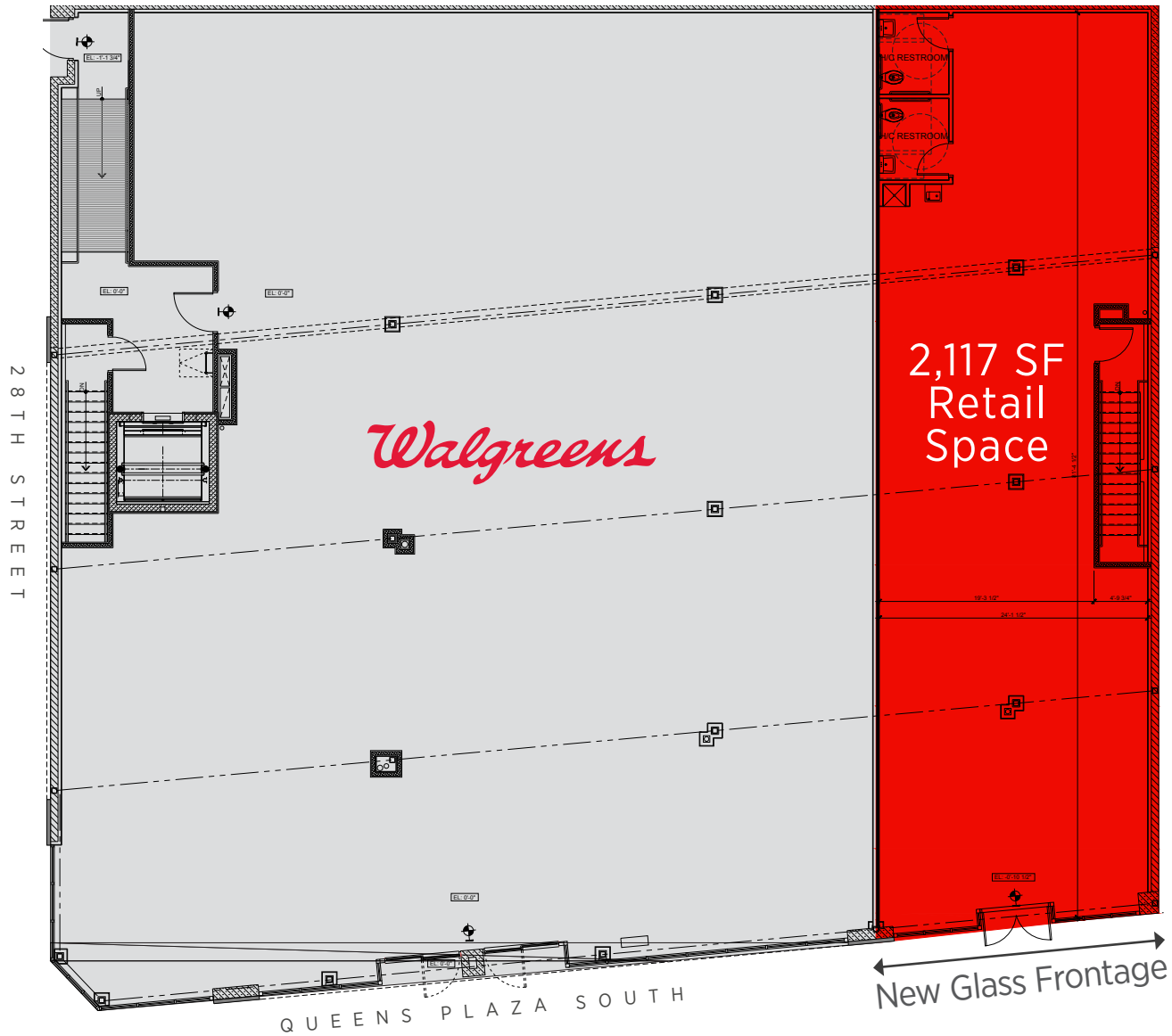


8 Subways/
5 Buses
are within 2 blocks

Exceptional Location, Easy Access



Sarah Cohen scohen@gothamrealtynyc.com Mobile: 203.984.0387



Ground Floor

2,117 SF Retail Space

18' ceiling

25' 5" frontage

HVAC provided

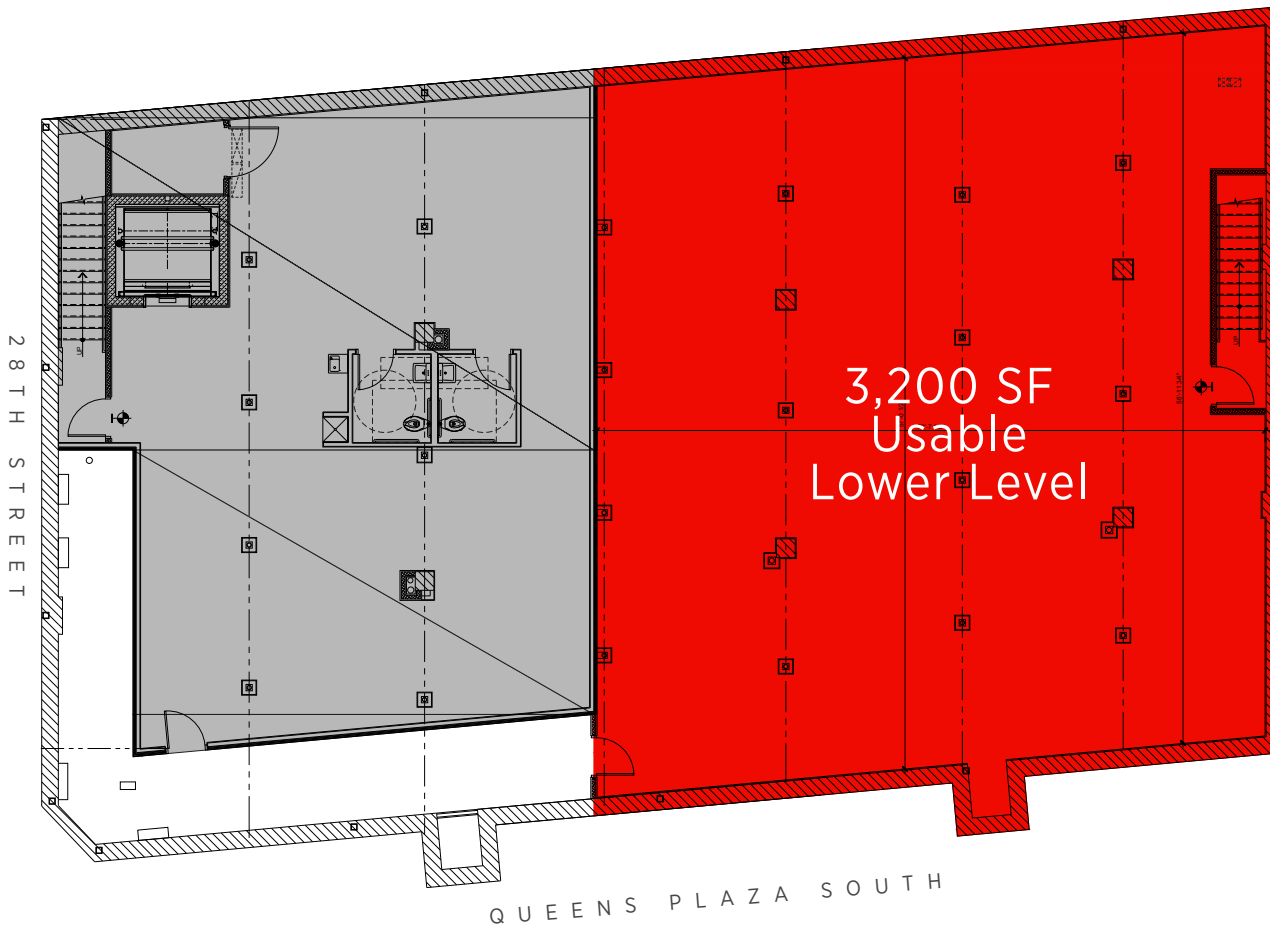
Fully sprinklered

2 ADA bathrooms

Mezzanine potential

Venting possible





Lower Level

3,200 SF Usable Space

New white box

Flexible space

Fully sprinklered

Perfect for distribution



Sarah Cohen scohen@gothamrealtynyc.com Mobile: **203.984.0387**



RESIDENTIAL

24,300+
Completed Units
Since 2006

11,800+
Added Units by 2024
(Announced)

RETAIL

815K+
SF Existing Retail in
Mixed-Use Buildings &
Renovated Commercial

400K+
Added SF By 2024
(Announced)

COMMERCIAL &
INDUSTRIAL

10M+
SF Existing New Buildings &
Renovated Commercial

5.6M+
Added SF by 2024
(Announced)

HOTELS

42 4,300+
Hotels Hotel Rooms
(Current/Open)

39 5,700+
Hotels Hotel Rooms
(In Planning/Construction)



Development at a Glance (as of April 2021)



Sarah Cohen scohen@gothamrealtynyc.com Mobile: 203.984.0387



5,000
Pedestrians
Passing Daily



182,000
Vehicles Passing
Per Day Via
Queensboro Bridge



6M
Annual Subway
Riders



115,000
Employees



6,600
Businesses



50,000
Students



32,000
Daytime Population



35.6
Average Age



\$103,596
Average Household
Income

Growing Residential and Working Population



Sarah Cohen scohen@gothamrealtynyc.com Mobile: **203.984.0387**

All information has been obtained from sources believed reliable, but has not been verified for accuracy or completeness. You should conduct a careful, independent investigation of the property and verify all information. Any reliance on this information is solely at your own risk. LICP data as of April 2021

